

Multifunctional POS

Operating Manual

Contents

1. Product Size.....	3
2. Product Structure.....	3
3. Integration	6
4. Operation Process.....	7
5. Other Functions	8
6. Product Datasheet	8
7. User Notice	9
8. Maintenance	9

1. Product Size:

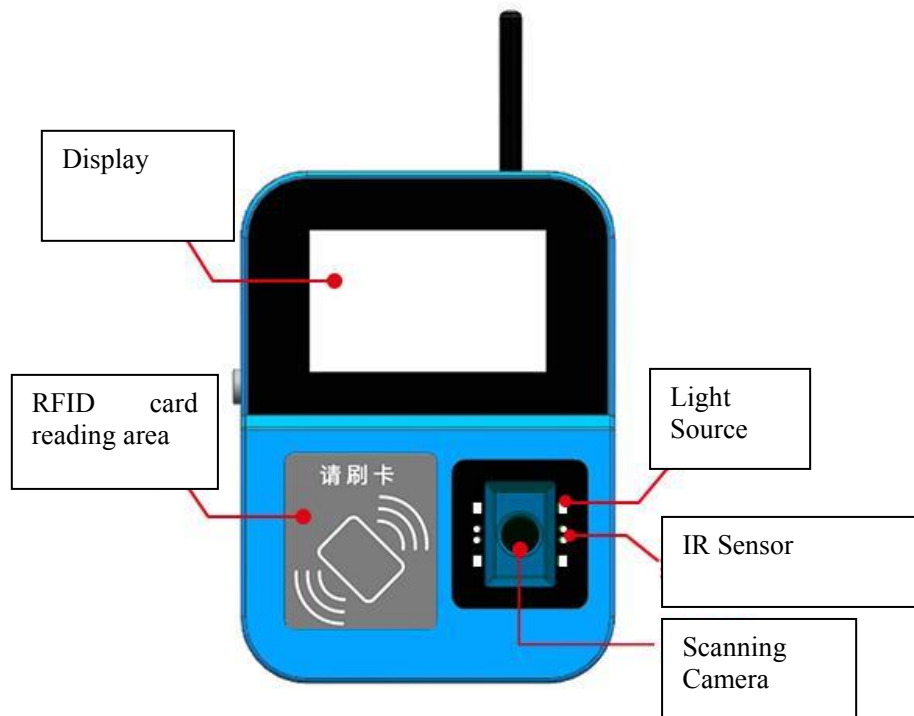
233mm×170mm×64mm



Pic 1.1.1

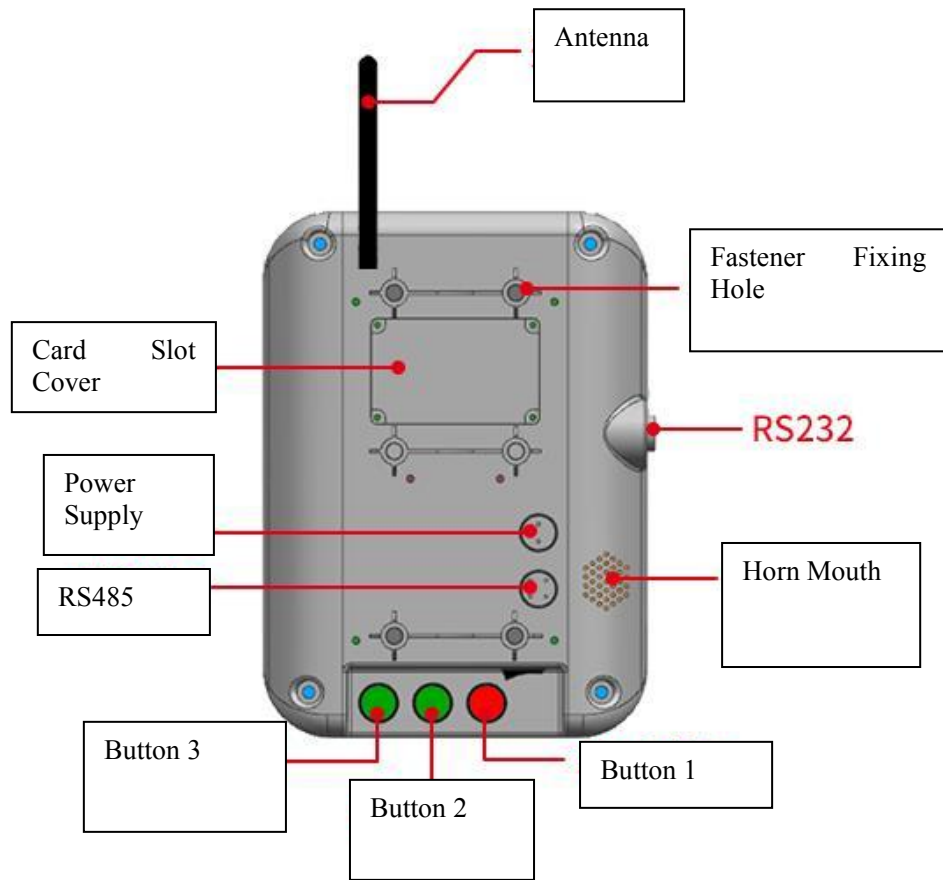
2. Product Structure

Front View



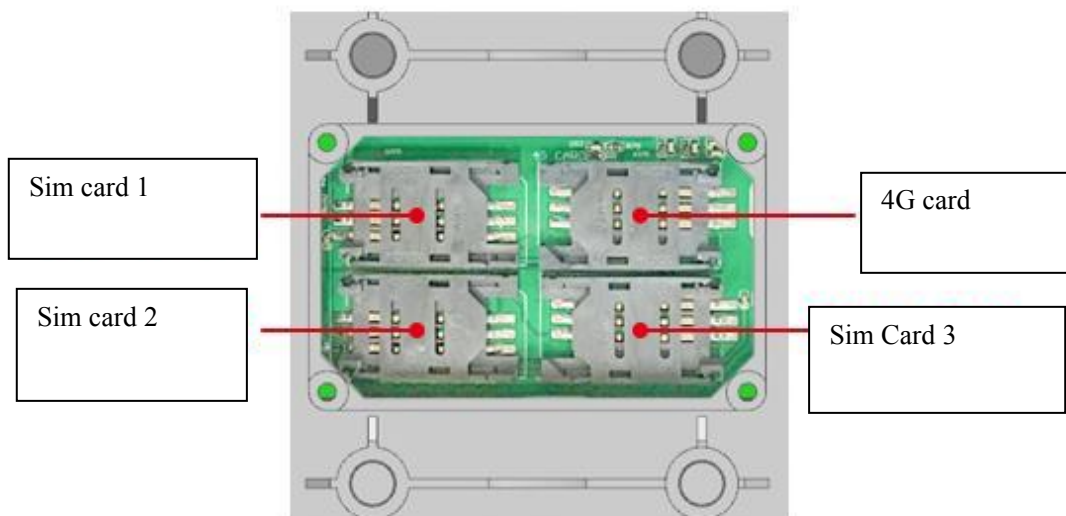
Pic 2.1.1 Front View

Back



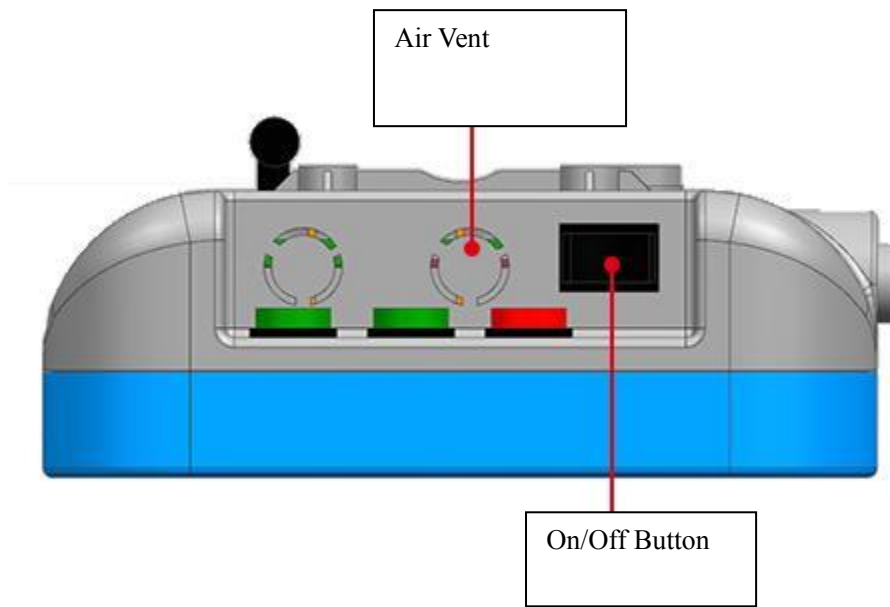
2.2.1 Back Structure

Card Slot



Pic 2.3.1 Card Slot

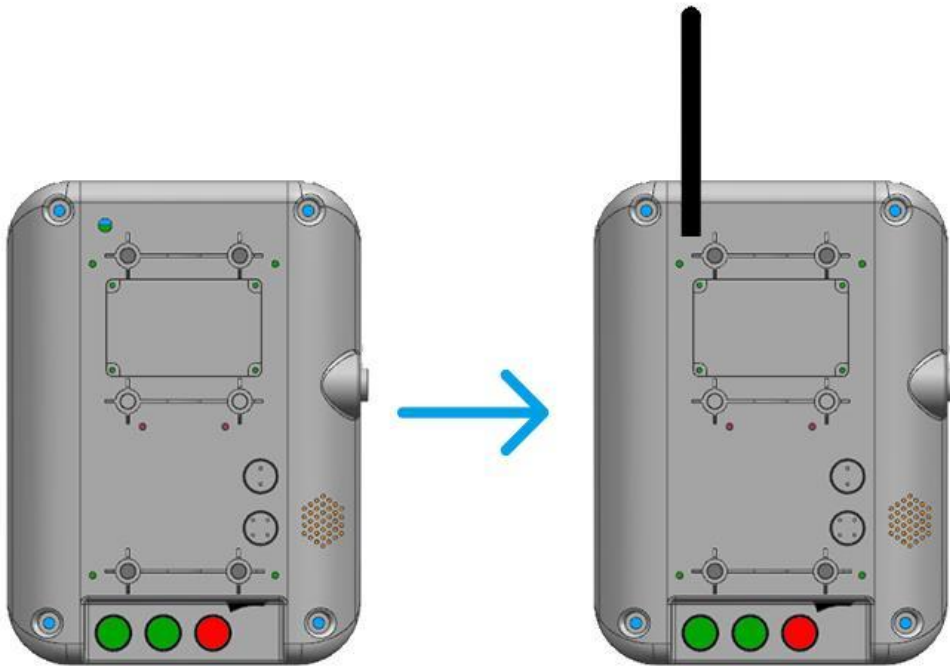
Bottom



Pic 2.4.1 Bottom Structure

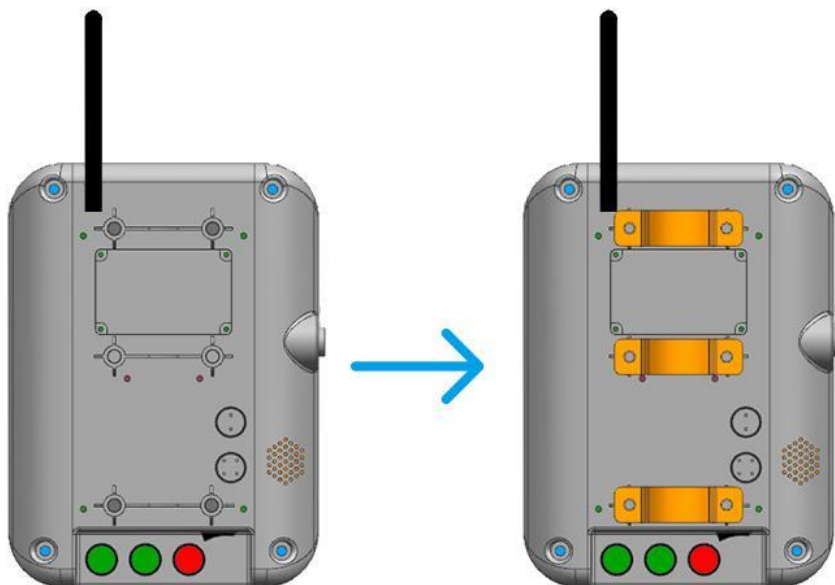
3. Integration

1. Connects antenna



Pic 3.1.1 Connects Antenna

2. Fix the machine

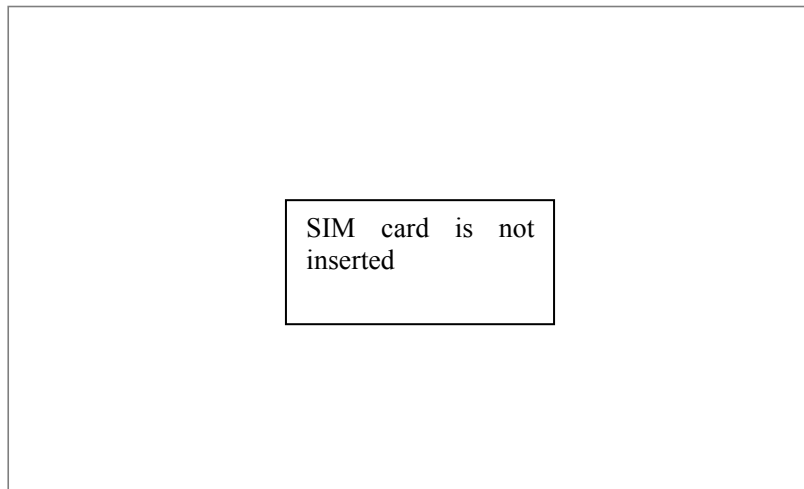


3.2.1 Fix the machine

4. Operation Process

A. Turning on

To detect whether SIM card is properly put in; If not, it will indicate



Pic 4.1.1 Display
Indication

b. Connects internet, and set the basic parameter of the machine through cloud card platform; when the internet is connected, the administrator can set the parameter, including tenant ID, POS no., Sim card no, agent ID, terminal code etc.

c. Introduce blacklist, rate, voice file etc through cloud card or COM assistant to burn the corresponding file;

d. To scan the card, if the card belongs to blacklist, or the card is expired, then the card is invalid and it will alarm; if the card is valid, it will deduct corresponding amount or times according to the rate and the display will show it and the transaction is recorded.

e. You can inquire the transaction records at the inquiry interface. The sums of uploaded transaction records and not loaded transaction records can be tracked.

5. Other Functions

A. Burning program

After power is off, press button 1; turn on power and it will enter burning program interface

B. Burning voice file

After the machine is working normally, pressing button 1 for a long time, and it will enter into voice file burning interface

C. Inquiry

After the machine is working normally, press the button 2 for a short time, you can inquire the POS info, transaction records etc.

D. Rate, driver card and ticket seller card

After the machine is working normally, press the button 3 for a long time and then you can set the rate, read the driver or ticket seller card.

(Note: the functions of three buttons can be customized)

6. Datasheet

Items	
Processor	32 bit ARM, 120MHz
Memory	64Kb FRAM. 8Mb+1Gb DataFlash
Contact less Card Scanning	1D, 2D barcode payment; support ISO14443 card, CPU card such as Mifare 1 S50/S70, MifarePro, IC card, 13.56 sim card etc.
Sim	Support four ISO7816 sim cards
Voice	It can store 265 pcs of voice, and the voice can be updated through software and no need to dismount the machine.
Display	5 inch TFT color display
Power	9V-36V , it has protection for over-voltage, over-current, converse connection, under-voltage.
Interface	RS232, RS485
Wireless Communication (optional)	TDD-2TG/FDD-LTE/wcomA/TD-SCDMA/GSM/GPRS/EDGE/WIFI/zigbee

7. User Notice

- A. Operate with care;
- B. Do not touch power cable when your hands are wet;
- C. Do not plug out the power cable brutally;
- D. Do not use damaged or loosen power cable and power outlet;
- E. Do not drag the antenna

8. Maintenance

Toubleshooting

Can not scan the card successfully: turn off the machine and turn on again; try to scan the employee card. If not solved, contact the manufacturer;

Successful scanning but no beep: contact manufacturer for repair;

Scan not scan the 2D code: bring the 2D code closer to the scan window.